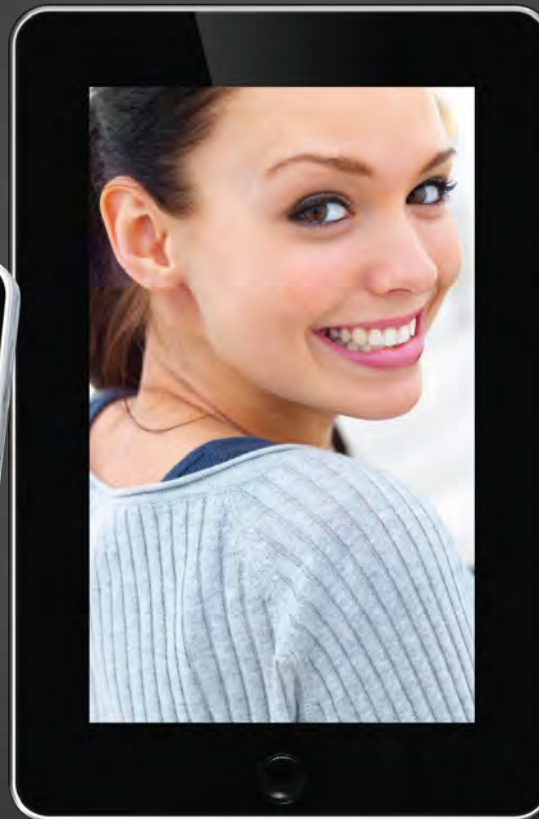


# eTouch™

## 7" Wi-Fi Android™ Tablet

the web, eMail, apps, music & movies at your fingertips



# eTouch™

## 7" Wi-Fi Touch-screen Tablet

Lightweight & portable, this stylish 7" eTouch™ gives you the web, eMail, apps, music & movies at your fingertips

The stylish looking eTouch™ tablet welcomes the new era of personal computing. Its handy tablet format means you use the eTouch™ inside your personal space delivering an awesome immersive experience, and lets you navigate around with a simple flick of your fingers. Ultra thin and lightweight you can take your eTouch™ anywhere to wirelessly jump on the internet, send an eMail or play music, movies and apps. Perfect for keeping in contact with the office, keeping on top of your social networking or just surfing the web.

The incredible LED backlit touchscreen is a neat 7" and its vibrant wide-screen is great for watching movies or sharing your photos.

The eTouch™ uses Google Android™ 1.6 operating system, an intuitive and powerful platform for touchscreen devices. Preloaded with a variety of useful apps the eTouch is one of the best ways to keep connected with friends and family and enjoying all your digital content at home or on the move.



## Technical Specification



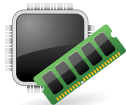
**Display 7" LED Touchscreen**  
7" diagonal- 800 x 480 pixels  
Widescreen LED backlit LCD



**Software Google Android™**  
Android™ 1.6 Mobile Operating System  
Touch optimised OS  
Embedded apps



**Connections Ports**  
:: 1 x micro USB 2.0 port, Volume + / -  
:: 3.5mm headphone port + Stereo Speakers  
:: Micro SD Card Slot



**Components LNX Code 9**  
ARM LNX Code 11 Processor  
128MB RAM



**Wireless 802.11 b/g**  
802.11 b/g specification  
2.4GHz Wi-Fi wireless connection



**Inputs Touchscreen**  
Resistive Touch Panel for fingertip navigation  
Back button, G-sensor  
Virtual onboard keyboard



**Storage 2GB Flash**  
2GB Flash NAND  
Solid State Storage Device- embedded



**Battery Power**  
:: Li-ion re-chargeable battery - 3.5 Hours Battery Life\*  
:: 9V ~ 2100mA DC / 110~240V AC



**Dimensions Size & Weight**  
Size - 203 x 137 x 14.5mm  
Weight - 350g



# eTouch™

## Accessories Keyboard Case

### Virtual Keyboard

While the functionality of the eTouch™ is very much like a laptop the main difference is the lack of keyboard.

In any instances when you need to type in passwords, web addresses or any form of text, the virtual keyboard will pop up and let you type just like you would on a physical keyboard.



### Keyboard Case

If you want the portability benefits of a tablet but like to type like you would on a laptop, the eTouch™ Keyboard Case (optional accessory) is an ideal solution.

This not only lets you protect your eTouch™ from bumps and scratches when you're out and about, but lets you increase your productivity using a physical QWERTY keyboard, just like on a laptop.





# eTouch™



**Dimensions** 203 x 137 x 14.5mm **Weight** 350g

