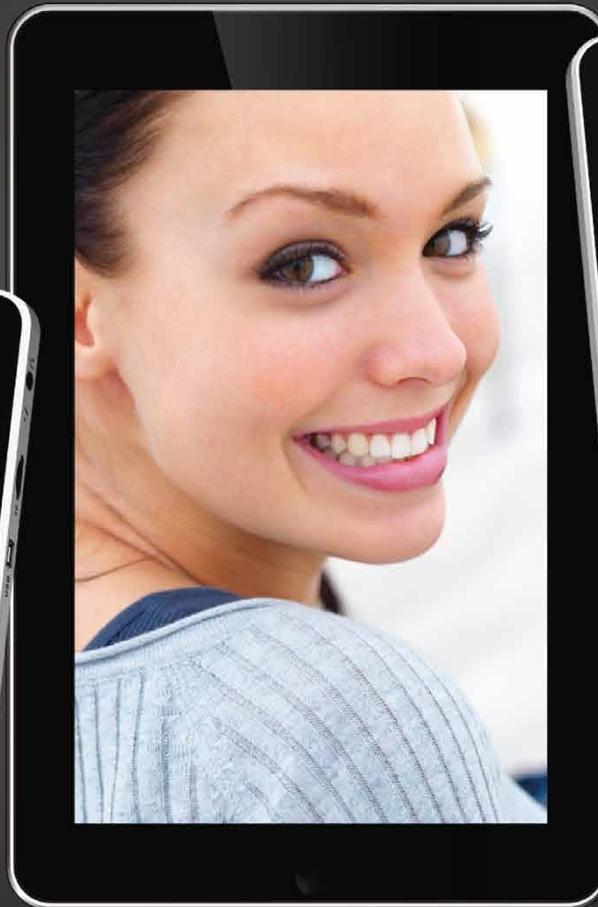


# eTouch™

## 10" Wi-Fi Android™ Tablet

the web, eMail, apps, music & movies at your fingertips



# eTouch™

## 10" Wi-Fi Touch-screen Tablet

Lightweight & portable, this stylish 10" eTouch™ gives you the web, eMail, apps, music & movies at your fingertips

The stylish looking eTouch™ tablet welcomes the new era of personal computing. Its handy tablet format means you use the eTouch™ inside your personal space delivering an awesome immersive experience, and lets you navigate around with a simple flick of your fingers. Ultra thin and lightweight you can take your eTouch™ anywhere to wirelessly jump on the internet, send an eMail or play music, movies and apps. Perfect for keeping in contact with the office, keeping on top of your social networking or just surfing the web.

The incredible LED backlit touchscreen is a huge 10.1" so you can browse the web without zooming in and out, and its vibrant wide-screen is great for watching movies or sharing your photos.

The eTouch™ uses Google Android™ 2.1 operating system, an intuitive and powerful platform for touchscreen devices. Preloaded with a variety of useful apps the eTouch also gives you access to the Android Market so you can personalise and add to your eTouch's functionality improving your experience further.



## Technical Specification



**Display 10" LED Touchscreen**  
10.1" diagonal- 1024 x 600 pixels  
Widescreen LED backlit LCD



**Software Google Android™**  
Android™ 2.1 Mobile Operating System  
Touch optimised OS  
Embedded apps & Marketplace



**Connections Ports**  
:: 1 x USB 2.0 port, Volume + / -  
:: 3.5mm headphone port + Stereo Speakers  
:: Micro SD Card Slot



**Components LNX Code 11**  
1.0GHz LNX Code 11 Processor  
256MB RAM DDRII Double Rate RAM



**Wireless 802.11 b/g**  
802.11 b/g Wi-Fi wireless connection  
10/100Mbps RJ45 Ethernet (via adaptor- optional)



**Inputs Touchscreen**  
Resistive Touch Panel for fingertip navigation  
Home button, G-sensor  
Virtual onboard keyboard



**Storage 2GB Flash**  
2GB Flash NAND  
Solid State Storage Device- embedded



**Battery Power**  
:: Li-ion re-chargeable battery - 3 Hours Battery Life\*  
:: 9V ~ 2100mA DC / 110~240V AC



**Dimensions Size & Weight**  
Size - 270 x 179 x 16mm  
Weight - 695g

# eTouch™



**Dimensions** 270 x 197 x 16mm **Weight** 695g





# eTouch™

## Accessories Carry- Case Keyboard

### Virtual Keyboard

While the functionality of the eTouch™ is very much like a laptop the main difference is the lack of keyboard.

In any instances when you need to type in passwords, web addresses or any form of text, the virtual keyboard will pop up and let you type just like you would on a physical keyboard.



### Carry-Case Keyboard Combo

If you want the portability benefits of a tablet but like to type like you would on a laptop, the eTouch™ carry-case keyboard (optional accessory) is an ideal solution.

This not only lets you protect your eTouch™ from bumps and scratches when you're out and about, but lets you increase your productivity using a physical QWERTY keyboard, just like on a laptop.

